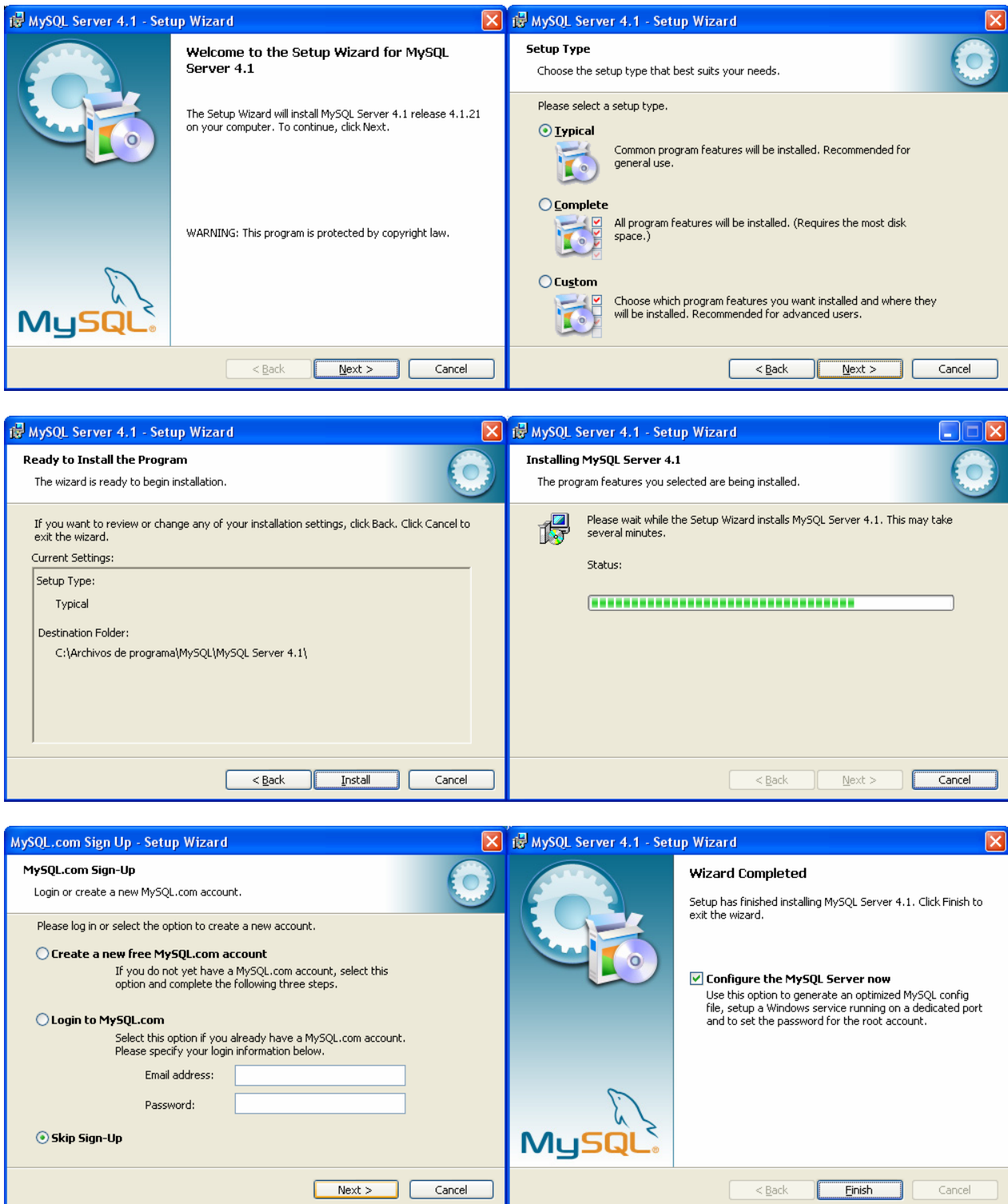


INSTALACIÓN DE MYSQL

Por favor ejecute el archivo **mysql-essential-4.1.21-win32.msi** y siga los siguientes pasos en cada pantalla que se presente:



MySQL Server Instance Configuration Wizard

Welcome to the MySQL Server Instance Configuration Wizard 1.0.8

The Configuration Wizard will allow you to configure the MySQL Server 4.1 server instance. To Continue, click Next.

MySQL

Next > Cancel

MySQL Server Instance Configuration Wizard

MySQL Server Instance Configuration

Configure the MySQL Server 4.1 server instance.

Please select a configuration type.

Detailed Configuration
Choose this configuration type to create the optimal server setup for this machine.

Standard Configuration
Use this only on machines that do not already have a MySQL server installation. This will use a general purpose configuration for the server that can be tuned manually.

< Back Next > Cancel

MySQL Server Instance Configuration Wizard

MySQL Server Instance Configuration

Configure the MySQL Server 4.1 server instance.

Please set the Windows options.

Install As Windows Service
This is the recommended way to run the MySQL server on Windows.

Service Name:

Launch the MySQL Server automatically

Include Bin Directory in Windows PATH
Check this option to include the directory containing the server / client executables in the Windows PATH variable so they can be called from the command line.

< Back Next > Cancel

MySQL Server Instance Configuration Wizard

MySQL Server Instance Configuration

Configure the MySQL Server 4.1 server instance.

Please set the security options.

Modify Security Settings

New root password: Enter the root password.

Confirm: Retype the password.

Enable root access from remote machines

Create An Anonymous Account
This option will create an anonymous account on this server. Please note that this can lead to an insecure system.

< Back Next > Cancel

MySQL Server Instance Configuration Wizard

MySQL Server Instance Configuration

Configure the MySQL Server 4.1 server instance.

Ready to execute ...

Prepare configuration

Write configuration file

Start service

Apply security settings

Please press [Execute] to start the configuration.

< Back Execute Cancel

MySQL Server Instance Configuration Wizard

MySQL Server Instance Configuration

Configure the MySQL Server 4.1 server instance.

Processing configuration ...

Prepare configuration

Write configuration file (C:\Archivos de programa\MySQL\MySQL Server 4.1\my.in)

Start service

Apply security settings

< Back Execute Cancel