

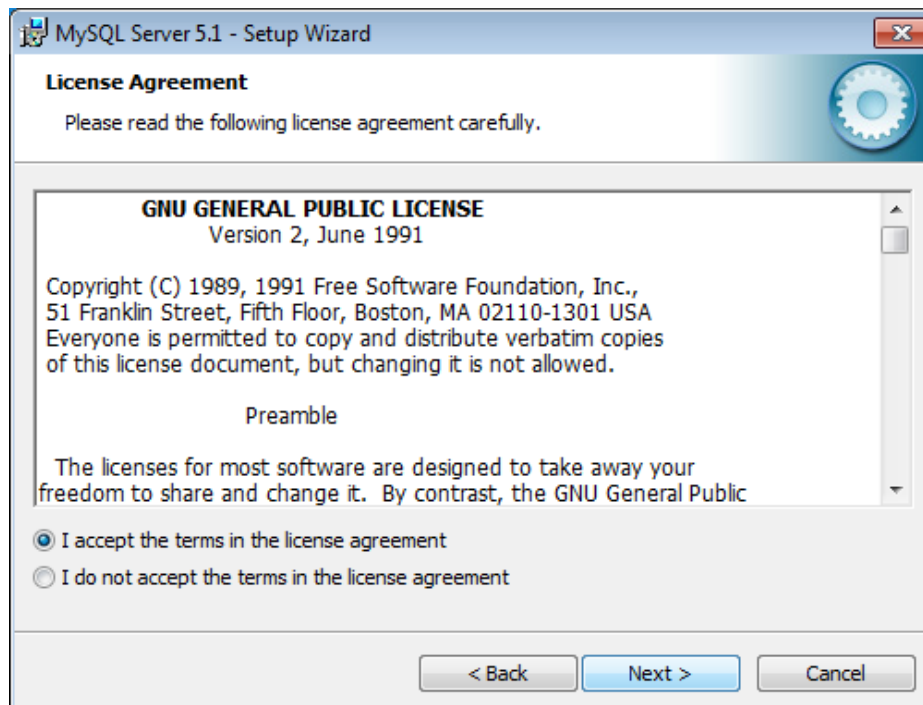
Instalación de Skynet

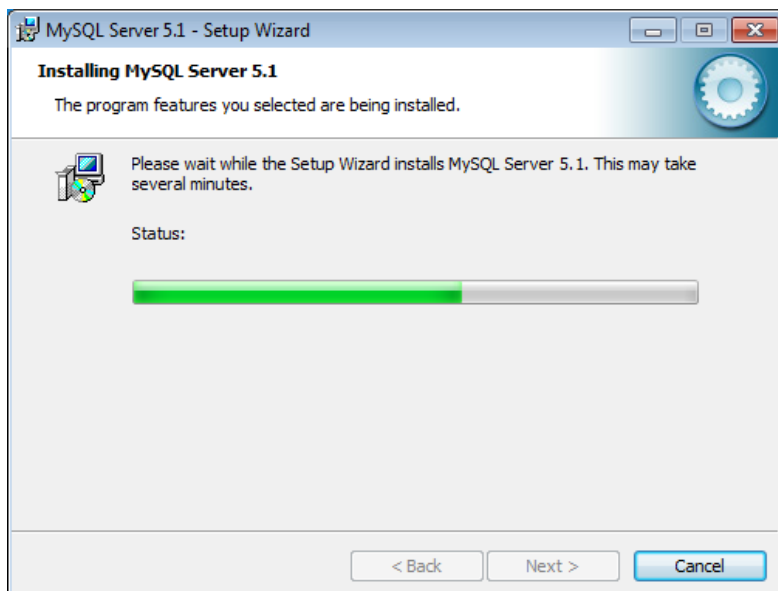
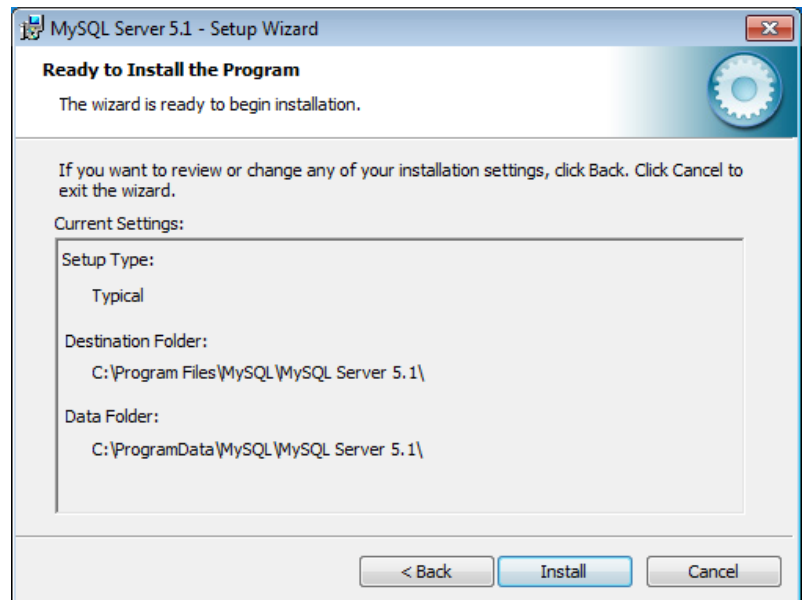
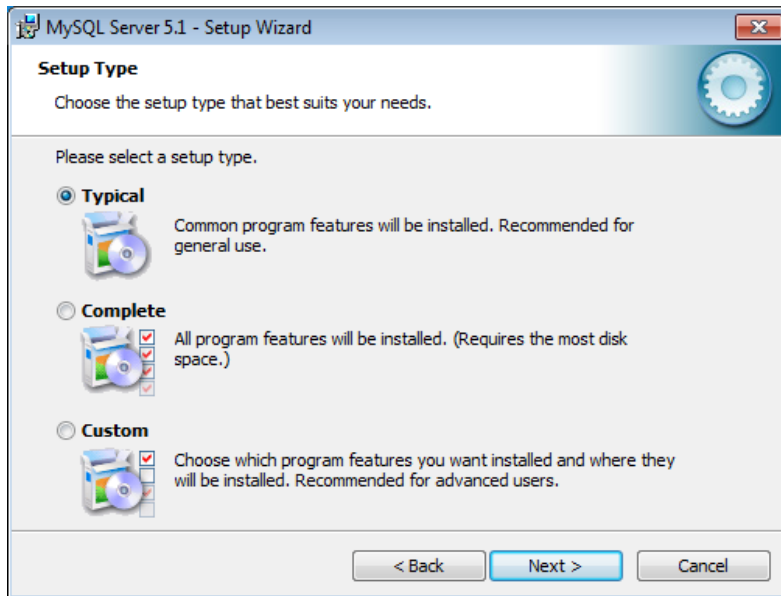
Software de Gestión Empresarial para PyME

Skynet funciona junto con el motor de base de datos MySQL. Recomendamos primero instalar **MySQL**. Dicho motor puede ser descargado de: <http://skynetgroup.org/skynet/faq>


En dicha pagina hallara un enlace para la descarga.

Posteriormente, siga la instalación de MySQL 5.1 en base a las siguientes ventanas:





MySQL Enterprise



A MySQL Enterprise subscription is the most comprehensive offering of MySQL database software, services, and support to ensure your business achieves the highest levels of reliability, security, and uptime.


An Enterprise Subscription includes:

- 1. The MySQL Enterprise Server** - The most reliable, secure, and up-to-date version of the world's most popular open source database.
- 2. MySQL Enterprise Monitor Service** - An automated virtual database assistant.
- 3. MySQL Production Support** - Technical and consultative support when you need it, along with service packs, hot-fixes, and more.

For more information click [More...] or visit www.mysql.com/enterprise


More ... < Back Next > Cancel

MySQL Enterprise



The MySQL Enterprise Monitor Service


- Quickly identifies your most expensive SQL code across all your servers.
- MySQL Advisors and 125+ Best Practice Rules ensure security and performance.
- Alerts and Expert Advice on how to fix problems and tune for peak performance.



For more information click [More...] or visit www.mysql.com/enterprise

Next >


MySQL Server 5.1 - Setup Wizard



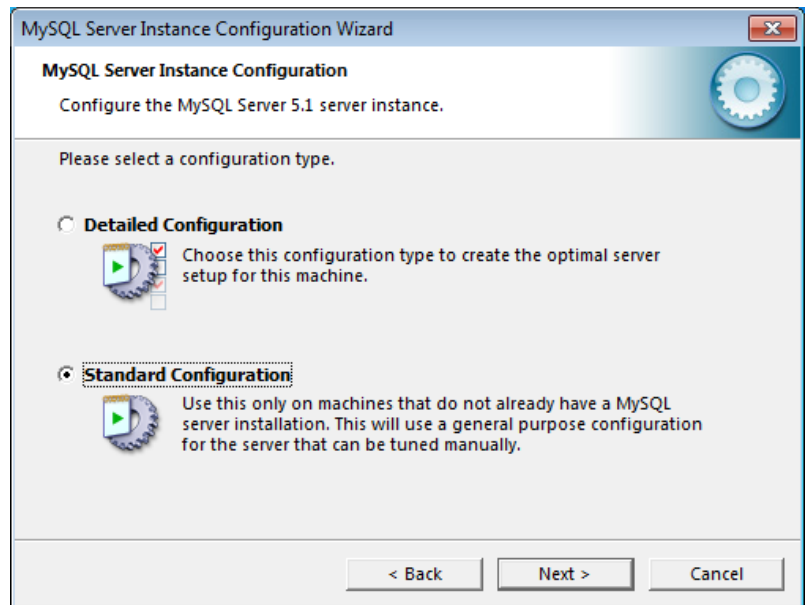
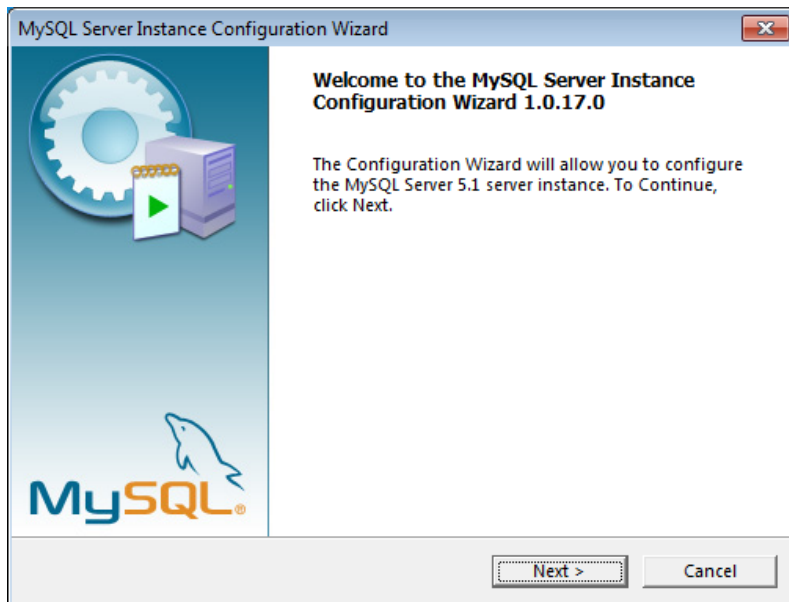
Wizard Completed

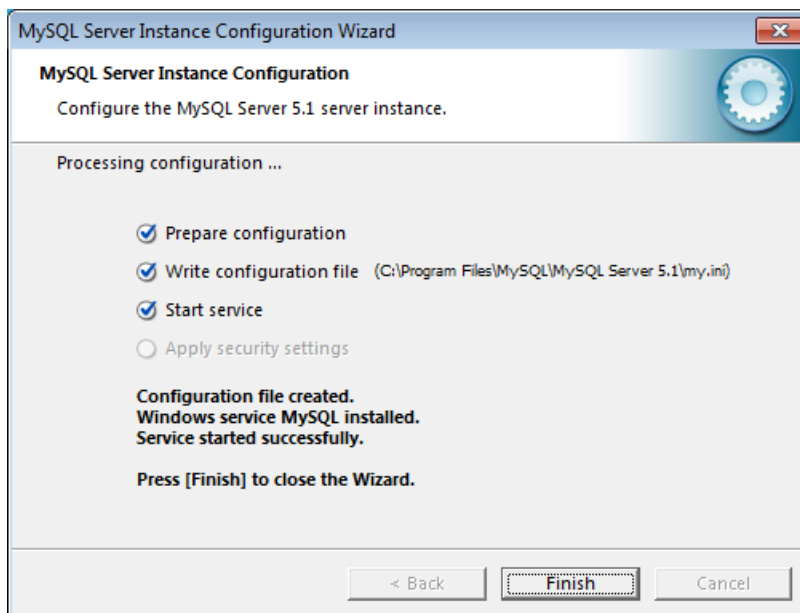
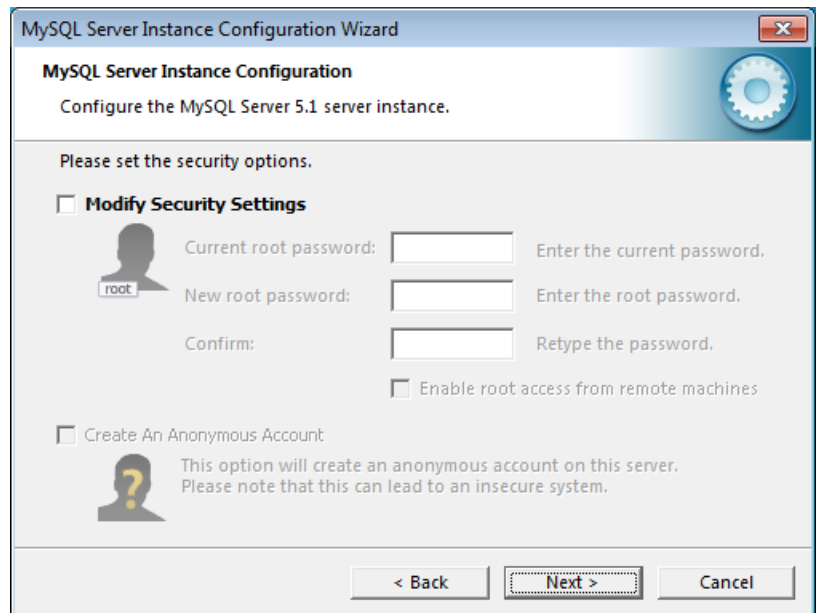
Setup has finished installing MySQL Server 5.1. Click Finish to exit the wizard.

Configure the MySQL Server now
Use this option to generate an optimized MySQL config file, setup a Windows service running on a dedicated port and to set the password for the root account.



< Back Finish Cancel



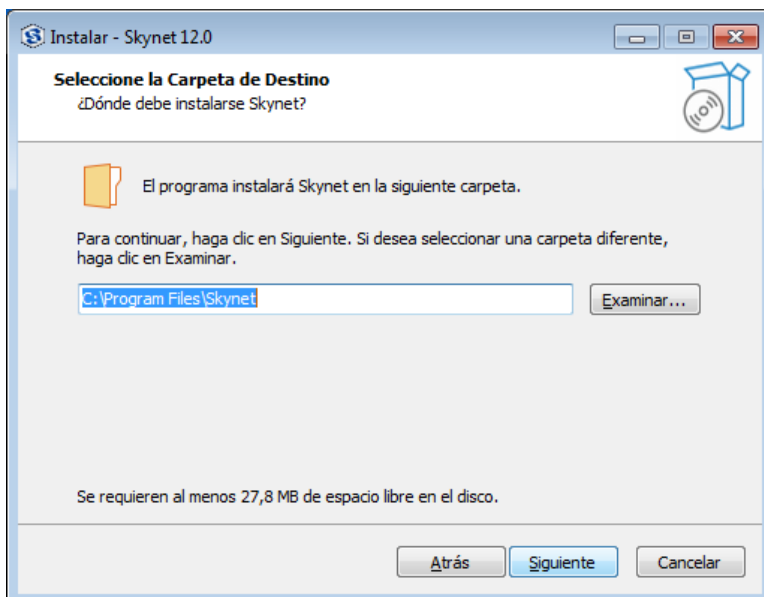
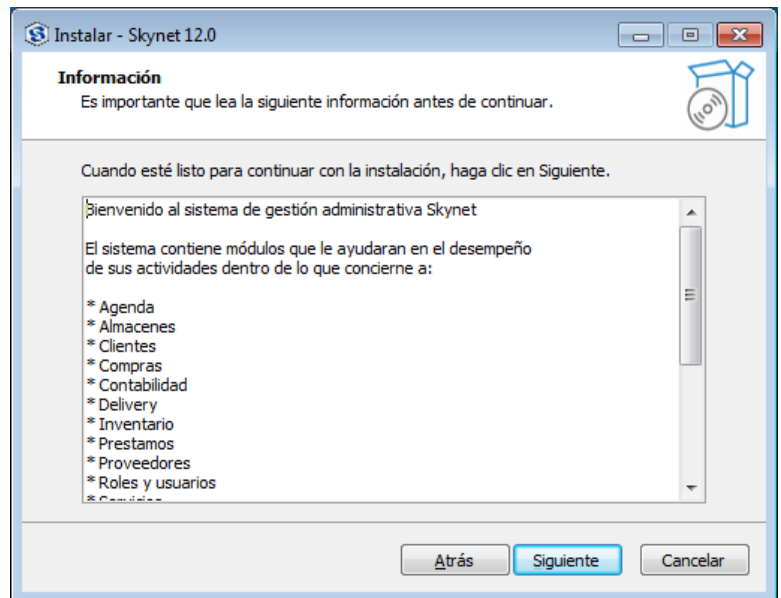
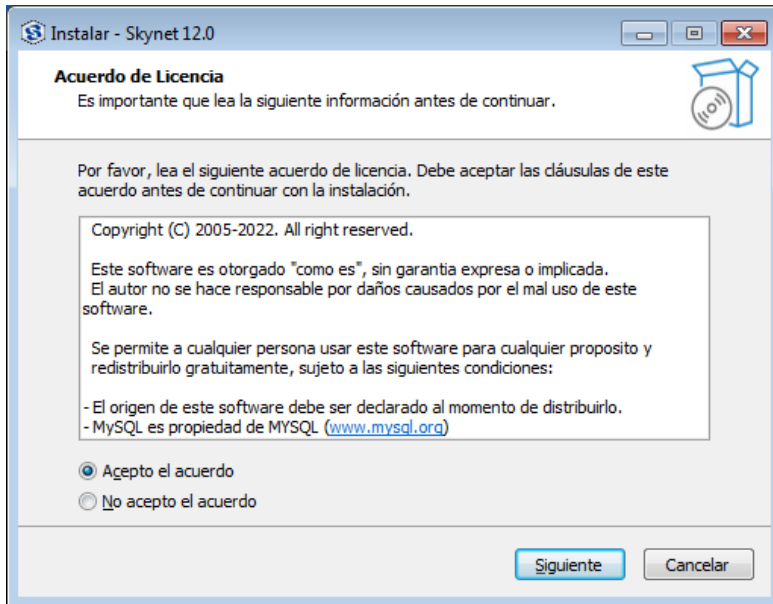


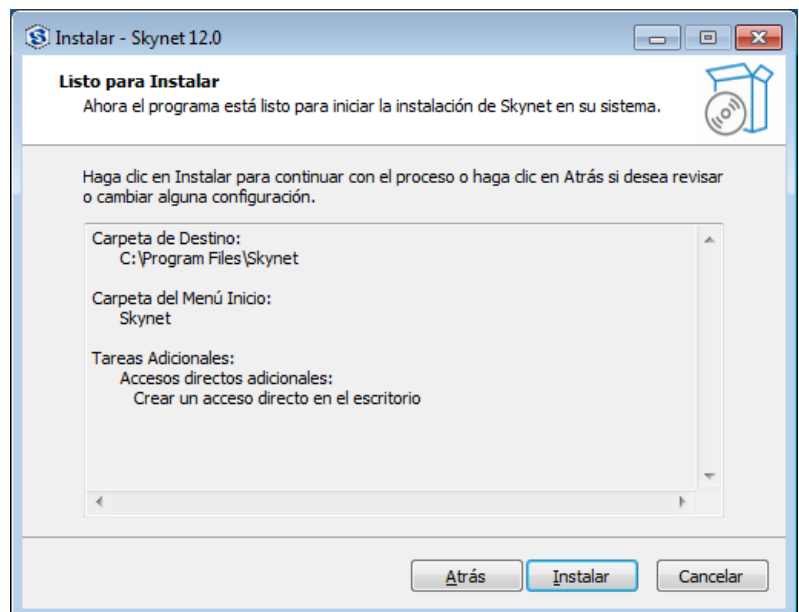
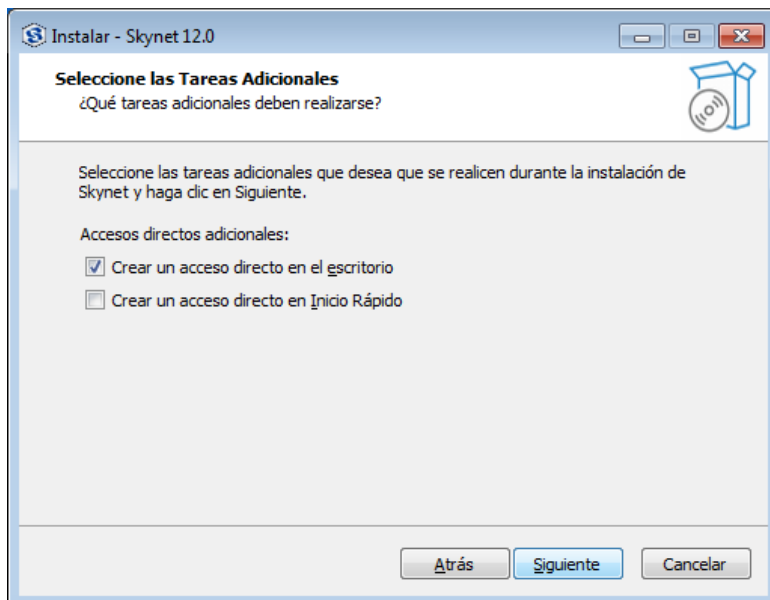
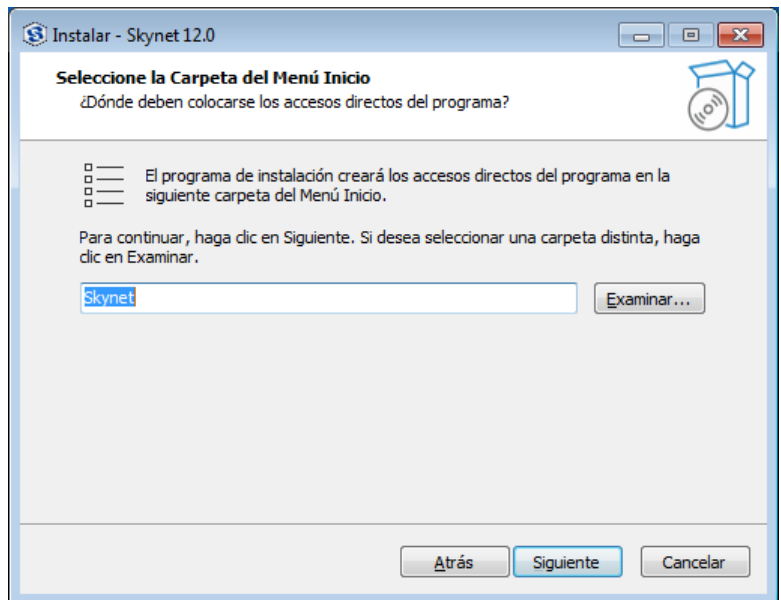
Con esto concluye la instalación de MySQL.

Ahora, veremos la instalación de **Skynet**. Esta instalación es mas sencilla.

Primero, descargue Skynet de: <http://skynetgroup.org/skynet/download>

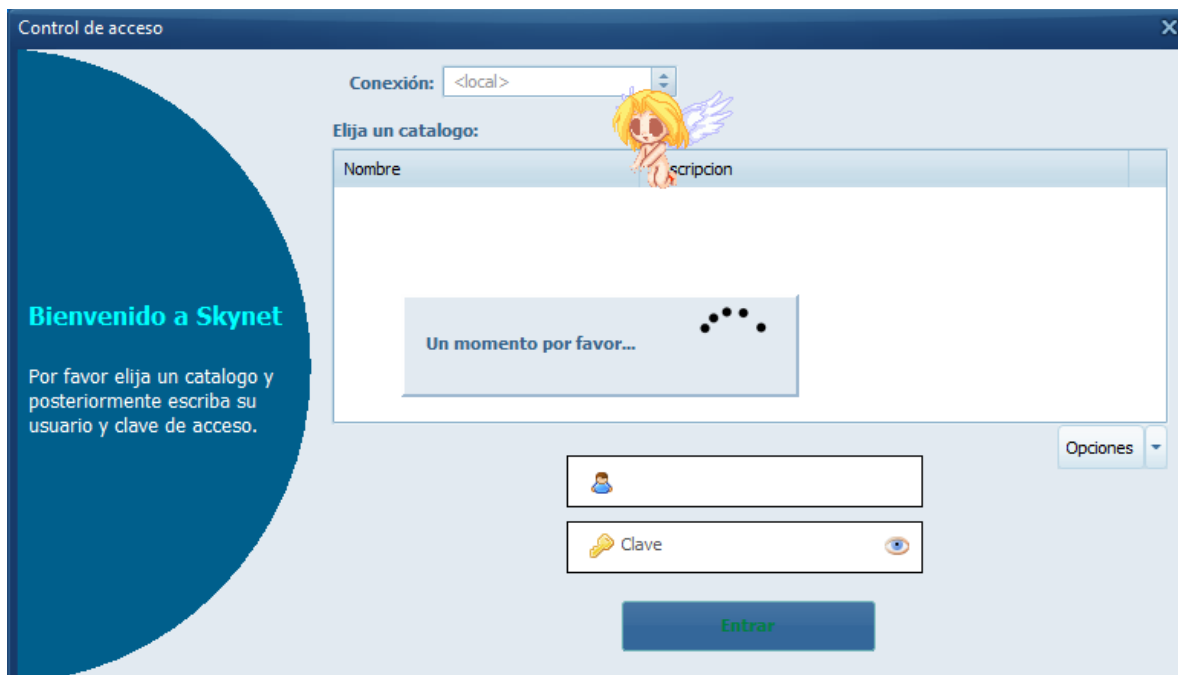
Luego, ejecute el archivo **InstalarSkynet12.0.exe** y siga los siguientes pasos:





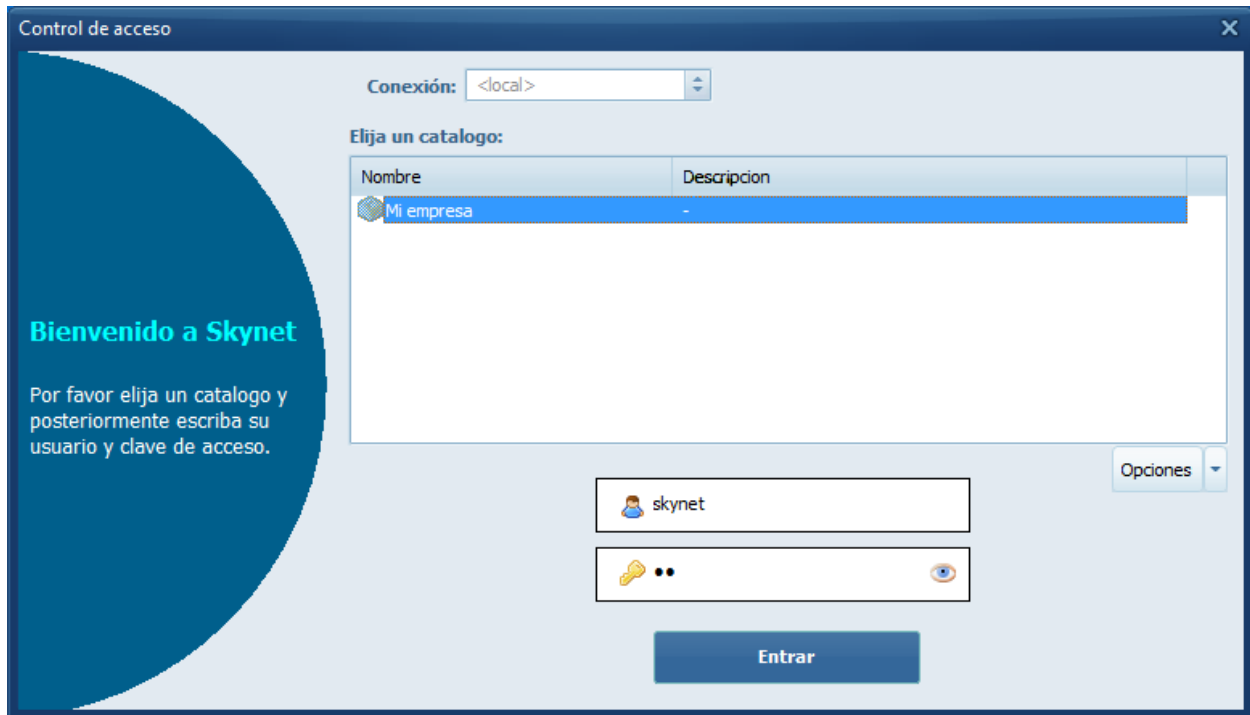


Finalmente, ejecute la aplicación y verá la siguiente ventana:



Como es la primera vez, el sistema se conecta a MySQL para crear la base de datos inicial. Esto puede llevar algunos momentos.

Luego, vera la siguiente ventana:



La primera vez los datos de ingreso son:

Usuario: **skynet**

Clave: **sk**